



DIPLOMA OF REMEDIAL MASSAGE

'Go forward'

www.sydneycollege.nsw.edu.au
RTO No 40896 CRICOS Provider Code 03409F

WELCOME

BY THE PRINCIPLE EXECUTIVE OFFICER



The mission of the Sydney College is a simple one - we provide quality training and assessment to our students to enable them to gain the highest level of skills and knowledge in the hospitality, cookery, and management industry sector. Harmonising theory and practice and integrating them successfully with the all the aspects and requirements of training and assessment, is the aim of the learning process.

At Sydney College, we have established our objectives based on the needs of the industry, expectations of the employers and requirements of the educational standards. These long-term objectives together with the ongoing quality training and assessment have led us to achieve the highest quality in our practices.

At Sydney College you will find a friendly and helpful environment with a mixture of nationalities and cultures among staff and students. Students are valued, respected and treated with the highest integrity. We understand the value of differences and the needs of our students and continuously strive to improve our student-centred approach in the delivery of courses.

When you become a part of our college, you will see that Sydney College is not only a means to gain a qualification and an internationally accepted certificate, but also a home for you and a valuable investment for your future. The friends and contacts you make during your study here will provide you with a great opportunity in your industry that may shape career. your future career.

Welcome to everyone.

STEPHEN P. RAINER BSC, MB, CHB, FRCPA
PEO Sydney College

SYDNEY

is the capital of the Australian state of New South Wales (N.S.W.) and lies on the south-east coast of the continent. It has the largest population of any city in Australia with a population of approximately 5 million 'Sydneyiders'. Sydney is often called the most multicultural city in Australia and one of the most multicultural cities in the world because of the large range of cultures found in the city and its suburbs.



A LITTLE BIT OF HISTORY

Sydney was established in 1788 at Sydney Cove by Captain Arthur Phillip, of the First Fleet, as a penal colony. The city is built on hills surrounding one of the world's largest natural harbours, Port Jackson, which is more commonly known as Sydney Harbour, renowned for the iconic Sydney Opera House and the Harbour Bridge. Sydney city is surrounded by national parks, and the coastal regions feature many bays, rivers and beaches, including the famous Bondi and Manly beaches. The city itself also has many parks including Hyde Park and the Royal Botanic Gardens.

SYDNEY TODAY

Sydney's central business district (CBD) extends southwards for about 3 km from Sydney Cove to the area around Central Train Station. The Sydney CBD is bounded on the east side by a chain of parkland, and the west by Darling Harbour, a tourist and nightlife precinct. Sydney has a huge range of sporting and recreational opportunities for residents, workers and visitors. The city contains a diverse network of public parks and reserves varying from bushland areas to formal parks and sportsgrounds. Sydney City Council provides many facilities including playgrounds, sports elds, town halls, community centres and meeting rooms available for hire, swimming centres, tennis courts and a skating facilities.

The background of the entire page is a soft-focus photograph of a spa or massage area. On the left, there are several neatly rolled white towels. In the center and right, several small, lit tealight candles in copper-colored holders are arranged on a wooden surface, casting a warm, golden glow. A single purple tulip flower is in the foreground on the right. The overall atmosphere is calm and relaxing.

**DIPLOMA
OF REMEDIAL MASSAGE**

HLT52021

DIPLOMA OF REMEDIAL MASSAGE

CRICOS
COURSE CODE
116266K

This qualification reflects the role of remedial massage therapists who work with clients presenting with soft tissue dysfunction, musculoskeletal imbalance or restriction in range of motion (ROM). Therapists may be self-employed or work within a larger health service.



Possible job titles

- ▶ Remedial Massage Therapist
- ▶ Massage Therapist



Entry requirements

Students are required to purchase a core text book for use during their studies.



Entry requirements for International Students

- ▶ 18 years of age or over
- ▶ An overall band score of IELTS 6.0 or equivalent
- ▶ Satisfactory completion of year 10 or equivalent



Assessments

Assessments consist of:

- ▶ Practical demonstration
- ▶ Projects assessments
- ▶ Written questions
- ▶ Role-plays
- ▶ Simulated workplace demonstration



Course Duration

This program is scheduled to be delivered over a 110-week timeframe of full-time study consisting of 60 weeks of scheduled class time, 20 weeks of work placement plus 30 weeks of breaks. Timetables may vary slightly taking into account public holiday periods such as Christmas & Easter.



DIPLOMA OF REMEDIAL MASSAGE



A typical study year

At Sydney College, each term consists of 10 weeks which is followed by a 2-week holiday. The total duration of the courses might vary based on holiday periods and intake dates. Holidays might be extended for one more week to take public holidays into consideration. A normal study year starting from January intake follows as below:

Term 1	Break	Term 2	Break	Term 3	Break	Term 4	Break
10 weeks	2 weeks	10 weeks	2 weeks	10 weeks	2 weeks	10 weeks	6 weeks



Qualification Structure

To successfully achieve a HLT52021 Diploma of Remedial Massage, participants must complete Twenty-one (21) units of competency, consisting of 18 core units and 3 elective units.



Units of Study

Group	Unit Code	Unit Name
Core	BSBESB401	Research and develop business plans
Core	CHCCOM006	Establish and manage client relationships
Core	CHCDIV001	Work with diverse people
Core	CHCLEG003	Manage legal and ethical compliance
Core	CHCPOL003	Research and apply evidence to practice
Core	CHCPRP005	Engage with health professionals and the health system
Core	HLTAAP002	Confirm physical health status
Core	HLTAAP003	Analyse and respond to client health information
Core	HLTINF004	Manage the prevention and control of infection
Core	HLTMSG009	Develop massage practice
Core	HLTMSG010	Assess client massage needs
Core	HLTMSG011	Provide massage treatments
Core	HLTMSG013	Perform remedial massage musculoskeletal assessments
Core	HLTMSG014	Provide remedial massage treatments
Core	HLTMSG015	Adapt massage treatments to meet specific needs
Core	HLTMSG016	Apply principles of pain neuroscience
Core	HLTMSG017	Apply remedial massage clinical practice
Core	HLTWHS004	Manage work health and safety
Elective	BSBESB404	Market new business ventures
Elective	CHCCCS001	Address the needs of people with chronic disease
Elective	HLTAID011	Provide First Aid

To achieve this qualification, the participants must have completed at least 400 hours of practical component to meet the requirements of these units. This component will be completed at Sydney College premises.

Delivery Mode and Location

Face to Face Learning and Practical Training

Participants will be involved in theoretical and practical training. Training and assessment is based on a classroom based training model comprised of the following components of delivery, supervision, assessment and support:

Classroom-based training sessions to develop the knowledge and theoretical understandings required to work in the field. Classroom settings will ensure full access to computers, internet, whiteboards, workbooks and textbooks. Telephone support is available from Monday to Friday 8.00 am to 6.00 pm from qualified staff employed by our RTO.

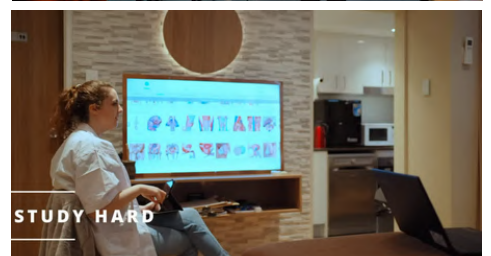
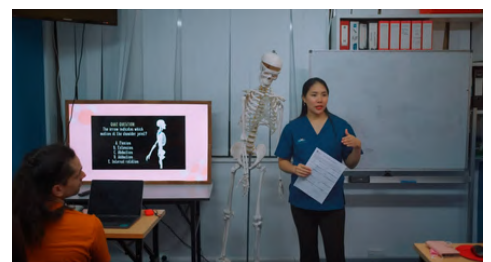
Trainers may provide additional learning material where gaps are identified in either the participant's underpinning knowledge or the training resources.

Trainer-led Online Learning

This includes trainer-led learning tasks which will include weekly learning tasks which the trainer will assign to each student group to be completed at their own pace. The task may come out direct from the student workbook or through the e-learning student portal. It aims to help the learner to learn at their own pace and take control of their learning while the trainer's role is to facilitate learning and provide support through posting discussion questions based on the learning task content.

Reasonable Adjustment

Sydney College has policies that include reasonable adjustment and access and equity principles. Reasonable adjustment will be provided for participants with special learning needs (such as a disability or learning difficulty) according to the nature of the learning need. Evidence collection can be adjusted to suit individual student needs if required, and will be endorsed by the Academic Manager / Program Coordinator, and student. Reasonable adjustments are made to ensure that the participant is not presented with artificial barriers to demonstrating achievement in the program of study. Reasonable adjustments may include the use of adaptive technology, educational support, and alternative methods of assessment such as oral assessment. The learning needs that form the basis of any adjustment to the training program will be identified and appropriate strategies will be agreed on with the student. Any adjustments will be recorded in the student's file, and will not compromise the competency standard. The program may be organised / formatted around a combination of approaches including: RPL/RCC; classroom training; in class practical sessions; National recognition; or a combination of these.





Issuing the Statement of Attainment

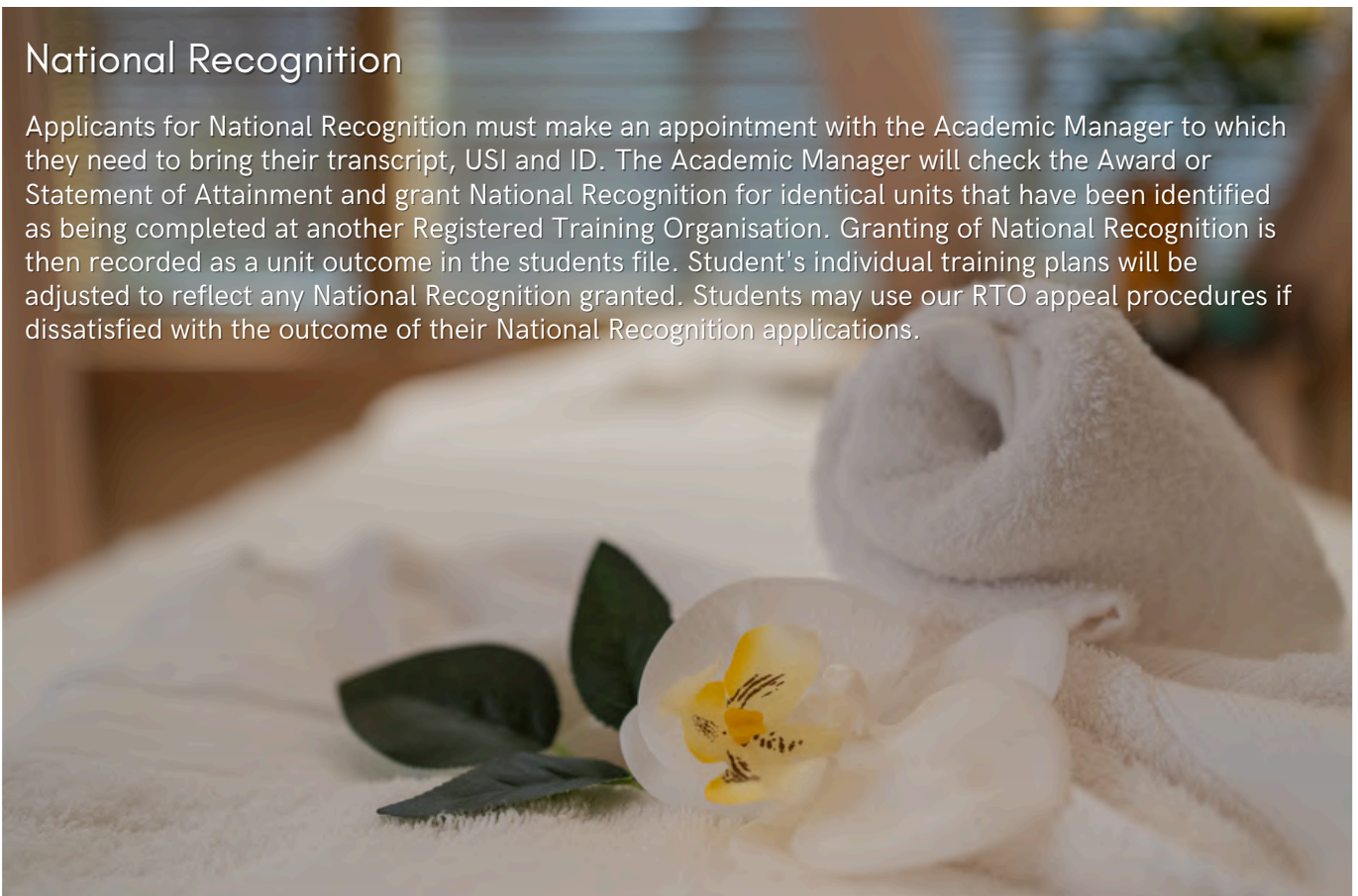
In the case where a student decides to withdraw from the course at any stage, Sydney College will issue a Statement of Attainment for units of competency completed as partial completion of their enrolled course within 30 days of the withdrawal approval.

Recognition of Prior Learning (RPL)/Credit Transfer

Students may be eligible for course credit as a result of previous study or recognition of a competency currently held. The granting of course credit means that students do not have to complete part of the course because of existing qualifications or statements of attainment. Recognition of Prior Learning is available for all courses and all students are offered the opportunity to participate in RPL upon enrolment. A streamlined RPL process has been developed which requires the student to make a self-assessment of their skills, participate in an interview with an assessor, provide documentary evidence and demonstrate skills, knowledge and experience. For further information about course credit and/or RPL, including applicable fees and how to apply, please contact our office.

National Recognition

Applicants for National Recognition must make an appointment with the Academic Manager to which they need to bring their transcript, USI and ID. The Academic Manager will check the Award or Statement of Attainment and grant National Recognition for identical units that have been identified as being completed at another Registered Training Organisation. Granting of National Recognition is then recorded as a unit outcome in the students file. Student's individual training plans will be adjusted to reflect any National Recognition granted. Students may use our RTO appeal procedures if dissatisfied with the outcome of their National Recognition applications.



Training Facility Resource

Sydney College has an established VET infrastructure to serve the needs of the training program and meet the training package requirements. The training premises are located at Level 2, 38 – 52 College Street, Darlinghurst NSW 2010. Students will be able to access the campus's computer facilities at this same location.



Classrooms, computer labs and printing facilities

Classrooms are fully equipped with white boards, data projectors, and Internet connections. Classrooms are well furnished with study tables and chairs. A laptop is available for every student for training purposes. Other computers are available for student self-study purposes in the open study area. All students have access to printing and photocopying facilities for course related materials. These facilities are available on user pay basis. Please contact the student services officer or IT help desk personal for further information.

Resource Centre and e-learning

All student learning resources are provided on the college's Moodle system. All of the online access material will be listed in the study guides of each any learning unit. Each individual student will be provided with a security login portal access, upon their enrolments with our college.



Student Support and Learning Assistance Centre

Learning Assistance is available for students requiring additional academic support or remedial literacy/numeracy assistance. One-to-one assistance with assignments and assessment tasks might be provided with a prior appointment.

Wireless campus, facilities and equipment

Classrooms and open study areas provide wireless connections to all students, and we strongly recommend each student to acquire a notebook computer of their own, to increase their study effectiveness. Facilities and equipment include:

- ▶ Fully equipped training rooms with laptops for every student
- ▶ Wi-Fi/Internet Access
- ▶ Data projectors
- ▶ Whiteboards
- ▶ Any other items that may be needed for a simulated environment



Complaints and Appeals

The college has a complaints and appeals procedure to provide students with a fair and equitable process for resolving any complaints or appeals they may have. The complaints and appeals procedure include a requirement that an independent mediator will be appointed if the student is dissatisfied with the process undertaken by the college. Further information on complaints and appeals can be found at www.sydneycollege.nsw.edu.au.



Student Fees

For a full list of student training and assessment and additional fees please refer to our website at www.sydneycollege.nsw.edu.au. Students will be provided with training and assessment resources unless otherwise stipulated on the website.

To Apply

To apply for enrolment at a course at Sydney College, students must complete the course application form and attached all the supporting documents mentioned in the application form which can be downloaded from our website www.sydneycollege.nsw.edu.au. You can email your application to enrol@nswenglish.com.au.

Alternatively, you can submit to our enrolment team working hours (9.00 am to 6.00 pm Monday to Friday) at Ground Floor, 38 - 52 College Street, Darlinghurst, NSW 2010

Enrolment and Orientation

Upon acceptance of your application for enrolment, a letter of offer, as well as a written agreement and tax invoice for remaining fees, will be forwarded to you. You will need to ensure that you read through all provided information as it will provide all necessary information about the course of study. A Confirmation of Enrolment (CoE) letter will be issued once the signed acceptance of the offer and written agreement and payment have been received.

The first day of each course will include orientation and induction. Orientation will include information about the campus, living in Australia, accessing our support services and methods for achieving success throughout your study, including attendance and course progress requirements. This course outline should be read in conjunction with Sydney College's Student Information Handbook. This is found online at www.sydneycollege.nsw.edu.au.

Overseas Student Health Cover

It is an obligation of being an International Student that you have Overseas Student Health Cover. The cost of OSHC is additional to the tuition fee and will vary depending on the duration of your study in Australia. Sydney College can arrange your cover for you with Bupa Private Health Insurance. This fee is payable prior to issuance of your confirmation of enrolment. Alternatively, you can use a provider of your choice.

Subject to the ESOS Act 2000, if funds have been disbursed to the provider, the student will be responsible for contacting the provider directly to apply for their OSHC refund. Students must provide the Overseas Health Care provider with the following information when applying for a refund: full name, date of birth, membership number (provided to the student by the International Office), together with the reason for refund and evidence of transferring to another university, or the date of departure from Australia.



'GO FORWARD'

NSW Business College t/a Sydney College
Ground Floor and Level 2, 38 College Street, Hyde Park Plaza Hotel, NSW, 2010
Phone: + 61 (0)2 8959 2717
e-mail: admin@sydneycollege.nsw.edu.au
Website: www.sydneycollege.nsw.edu.au
ABN No: 45 163 454 797
RTO No: 40896 CRICOS Provider Code: 03409F